

Manual push trolley - "SC" type

The machines are planned in conformity with the 2006/42/EEC Directive

With: EC markings
EC declaration of conformity
Statement report-Fitting for use
Information for use



INTENDED USE :

The manual push trolley SC type are exclusively planned to move the weight applied to the chain hoist, running on the lower flanges of the beam, in conditions of safe and controlled efficiency, respecting the measures and limits of use as described in the Information of use, and using the authorized lifting machine and accessories.

TECHNICAL AND CONSTRUCTION CHARACTERISTICS :

Sides: in steel sheet, above which the pins of the motion

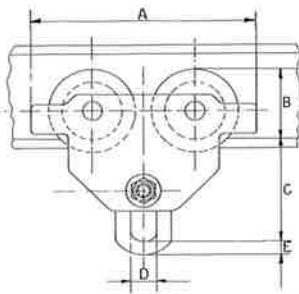
Lower tie-rod: in steel, stopped on the sides by nuts, washers and split pins and provided with various depth spacers, in order that the trolley is adjustable to the beam.

Wheels: in cast iron mechanically worked, with a rolling strip appropriate to the expected running beam.

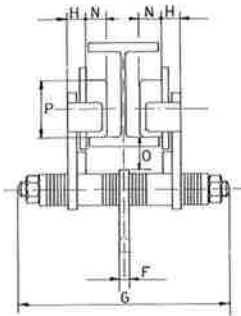
The wheels are supported on permanently lubricated ball bearings (simple or double)

Trolley plate (for hoist): is the base and the hanging point of the lifting unity, in steel, with an appropriate shaped buttonhole.

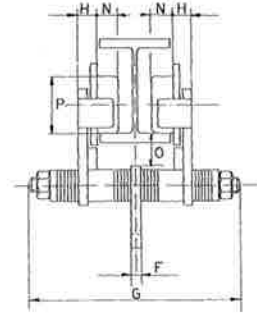
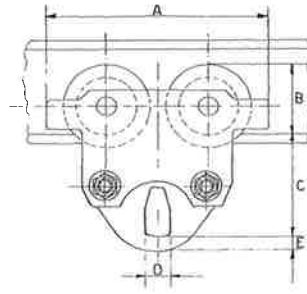
Trolley control: is activated by pushing directly the lifted weight



500 KG - 5000 KG TROLLEY



10000 KG TROLLEY



CAPACITY	kg	500	1.000	1.500	2.000	3.000	5.000	10.000	
Minimum radius	m	0,8	1,0	1,0	1,1	1,3	1,4	2,0	
Measure A	mm	200	246	261	275	333	377	423	
Measure B	mm	67	81	88	94	115	126	155	
Measure C	mm	105	125	132	141	167	192	190	
Measure D	mm	24	27	31	37	39	49	71	
Measure E	mm	14	15	17	20	23	31	50	
Measure F	mm	6	8	10	12	14	16	20	
with tie-rod A	mm	193	240	247	270	295	- -	- -	
Measure G with tie-rod B	mm	246	311	309	327	343	354	387	
with tie-rod C	mm	295	413	412	429	445	456	489	
Measure H	mm	17	22	22	26	28	38	48	
Measure N	mm	17	19	21	23	26	35	42	
Measure O	mm	30	37	37	36	38	41	42	
Measure P	mm	55	68	74	79	99	109	135	
Trolley with tie-rod A type	Beam lower flange width	mm	50 - 100	58 - 131	70 - 135	80 - 143	100 - 150	- -	- -
	Weight	kg	5.3	9.0	11.0	16.0	25.0	- -	- -
	Model and order code		SC500A	SC1000A	SC1500A	SC2000A	SC3000A	- -	- -
Trolley with tie-rod B type	Beam lower flange width	mm	50 - 150	58 - 200	70 - 200	80 - 200	100 - 200	106 - 200	120 - 200
	Weight	kg	5.5	10.0	12.0	17.0	26.5	39.5	73.0
	Model and order code		SC500B	SC1000B	SC1500B	SC2000B	SC3000B	SC5000B	SC10000B
Trolley with tie-rod C type	Beam lower flange width	mm	50 - 200	58 - 300	70 - 300	80 - 300	100 - 300	106 - 300	120 - 300
	Weight	kg	6.0	11.0	13.0	18.5	28	42.0	77.0
	Model and order code		SC500C	SC1000C	SC1500C	SC2000C	SC3000C	SC5000C	SC10000C