

**A.S. CARLO-SAPORITI-VERGHERA**

**CATALOGUE  
2016**



## Note

A series of horizontal dotted lines for writing notes, spanning the width of the page.

# INDEX



**ATEX**  
Page 1



**MANUAL CHAIN HOIST PHOLGOR - "ARC" TYPE**  
Page 2



**MANUAL PUSH TROLLEY - "SC" TYPE**  
Page 3



**GEARED TROLLEY - "MC" TYPE**  
Page 4



**LOW HEADROOM CHAIN HOIST WITH PUSH TROLLEY - "CC-S" TYPE**  
Page 5



**LOW HEADROOM CHAIN HOIST WITH GEARED TROLLEY - "CC-M" TYPE**  
Page 6



**ULTRA-LOW HEADROOM CHAIN HOIST WITH GEREAD TROLLEY - "CR" TYPE**  
Page 7



**MANUAL SPUR GEAR ROPE WINCH "CL" TYPE**  
Page 8



**ELECTRIC CABLE WINCH "EW" TYPE**  
Page 9-10



**LEVER HOIST "ATPC" TYPE**  
Page 11



**CAST IRON HAND WHEEL**  
Page 12

## CATALOGUE 2016



**A.S. CARLO SAPORITI S.R.L. - VERGHERA**  
hoisting device

21017 Verghera (VA)  
Via Nino Locamo, 123  
Tel. + 39 0331 228.464 - Fax +39 0331 223988  
E-Mail: [info@saporitisrl.it](mailto:info@saporitisrl.it)  
[www.saporitisrl.it](http://www.saporitisrl.it)

# ATEX



## THE FOLLOWING “PHOLGOR” EQUIPMENT:

- “Manual hoists type ARC”
- “Manual trolleys type SC and MC”
- “Manual hoists combined with trolley type CCS and CCM”
- “Manual hoists ultralow headroom combined with trolley type CR”

**CAN BE BUILT IN ACCORDING TO "ATEX" DIRECTIVE 2014/34/UE**

The equipment ATEX are classified in **Group II - Category 2 GD**  
(for areas classified “1 Gas and 21 Dust”)  
• **Temperature class: T5**  
• **Maximum surface temperature: 100 °C**



TECHNICAL AND CONSTRUCTION  
CHARACTERISTICS ARE IDENTICAL TO THOSE FOR  
THE STANDARD VERSION EXCEPT FOR THE  
FOLLOWING FEATURES:

- **Stainless steel hand chain**
- **Bronze coated hooks**
- **Solid bronze ratchet disk**
- **Solid bronze load chain guide**
- **Solid bronze wheels**
- **Rubber buffer**

# Manual chain hoist Pholgor - "ARC" type

The machines are planned in conformity with the 2006/42/EEC Directive



**With:** EC markings  
EC declaration of conformity  
Statement report-Fitting for use  
Information for use



**INTENDED USE :** The chain hoists are planned only to lift free weights in the space, straight up, in condition of safe and controlled efficiency, in accordance to the measures and limits of use as described in the instructions of use and using accessories that the grip element (lifting hook) and the upper base (hanging hook) allow

## TECHNICAL AND CONSTRUCTION CHARACTERISTICS :

**Structure :** compact and light

**Reducer:** coaxial with high-resistance cylindrical steel gears. Module toothing entirely supported on ball bearings closed in a carter; permanently lubricated.

**Load sprocket:** with four pockets, molten, thermally treated for a perfect running of the carrying chain.

**Chain guide and extractor:** guarantee a precise housing and a perfect extraction of the carrying chain either in raise or in descent.

**Brake:** with a safety jump to stop the weight in the wanted position. The brake is automatic at weight pression and has two friction joints, free from asbestos.

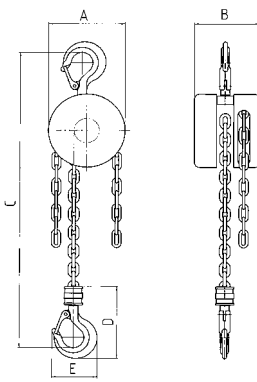
**Carrying chain limit switches:** composed of two steel plates fixed on the descent side of the chain that avoids the chain going out if the operator tries to raise the hook lower than the maximum limit.

**Hanging and lifting hooks:** high resistant, in tempered steel, turning with ball bearing, with a safety device to avoid unhitching.

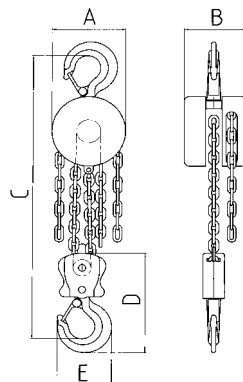
**Moving/hand chain:** in round steel, running on a pocket pulley. Chain and pulley are protected by a steel sheet side cover.

**Carrying chain:** in high resistant steel, with round links, superficially hardened, covered with zinc to obtain a high resistance to wear, to corrosion and to ageing.

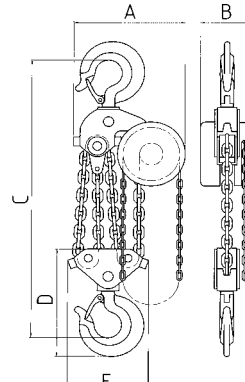
**Hoist control:** The hoist is activated by pulling manually one of the descent falls of the moving /motion chain.



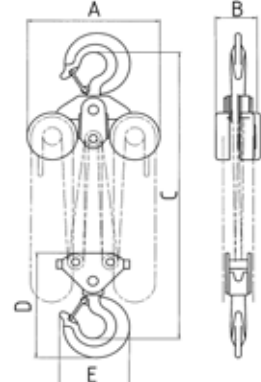
kg 500 - 1000 - 1500  
1 fall of chain



kg 2000 - 3000 - 5000  
2 falls of chains



kg 10000  
4 falls of chains



Kg 20000  
8 falls of chains

CAPACITY	kg	500	1.000	1.500	2.000	3.000	5.000	10.000	20.000
MODEL		ARC500	ARC1000	ARC1500	ARC2000	ARC3000	ARC5000	ARC10000	ARC20000
Fall of chain	n	1	1	1	2	2	2	4	8
Raising with 5 mt of hand chain	mm	178	120	94	60	47	30	15	15
Effort on the hand chain	kg	22	30	35	31	36	39	40	40
Measure A	mm	122	142	180	142	180	210	360	580
Measure B	mm	108	122	142	122	142	165	165	190
Measure C	mm	305	350	390	430	530	640	750	1100
Measure D	mm	120	140	160	200	245	300	360	480
Measure E	mm	68	80	105	105	125	160	260	310
Load with 3 mt load chain and 2.50 mt hand chain	kg	8	9,5	15,5	14	23	37	70	150
Weight for each mt more of chain	kg	1,71	1,71	2,31	2,51	3,71	5,31	9,71	19,42

# Manual push trolley - "SC" type

The machines are planned in conformity with the 2006/42/EEC Directive

**With:** EC markings  
EC declaration of conformity  
Statement report-Fitting for use  
Information for use



## INTENDED USE :

The manual push trolley SC type are exclusively planned to move the weight applied to the chain hoist, running on the lower flanges of the beam, in conditions of safe and controlled efficiency, respecting the measures and limits of use as described in the Information of use, and using the authorized lifting machine and accessories.

## TECHNICAL AND CONSTRUCTION CHARACTERISTICS :

**Sides:** in steel sheet, above which the pins of the motion

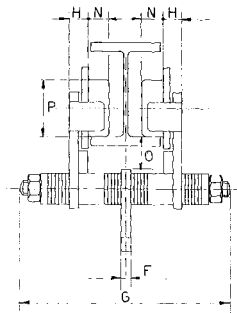
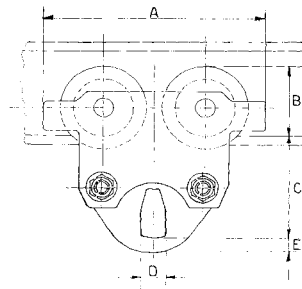
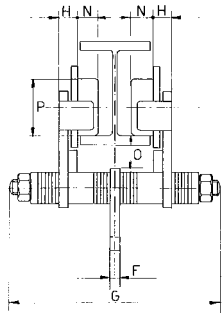
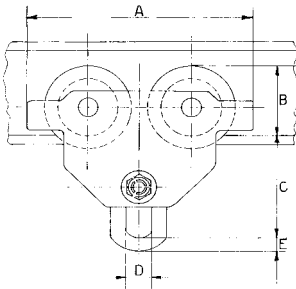
**Lower tie-rod:** in steel, stopped on the sides by nuts, washers and split pins and provided with various depth spacers, in order that the trolley is adjustable to the beam.

**Wheels:** in cast iron mechanically worked, with a rolling strip appropriate to the expected running beam.

The wheels are supported on permanently lubricated ball bearings (simple or double)

**Trolley plate (for hoist):** is the base and the hanging point of the lifting unity, in steel, with an appropriate shaped buttonhole.

**Trolley control:** is activated by pushing directly the lifted weight



500 KG - 5000 KG TROLLEY

10000 KG TROLLEY

CAPACITY		kg	500	1.000	1.500	2.000	3.000	5.000	10.000
Minimum radius		m	0,8	1,0	1,0	1,1	1,3	1,4	2,0
Measure A		mm	200	246	261	275	333	377	423
Measure B		mm	67	81	88	94	115	126	155
Measure C		mm	105	125	132	141	167	192	190
Measure D		mm	24	27	31	37	39	49	71
Measure E		mm	14	15	17	20	23	31	50
Measure F		mm	6	8	10	12	14	16	20
with tie-rod A		mm	193	240	247	270	295	- -	- -
Measure G with tie-rod B		mm	246	311	309	327	343	354	387
with tie-rod C		mm	295	413	412	429	445	456	489
Measure H		mm	17	22	22	26	28	38	48
Measure N		mm	17	19	21	23	26	35	42
Measure O		mm	30	37	37	36	38	41	42
Measure P		mm	55	68	74	79	99	109	135
Trolley with tie-rod A type	Beam lower flange width	mm	50 - 100	58 - 131	70 - 135	80 - 143	100 - 150	- -	- -
	Weight	kg	5.3	9.0	11.0	16.0	25.0	- -	- -
	Model and order code		SC500A	SC1000A	SC1500A	SC2000A	SC3000A	- -	- -
Trolley with tie-rod B type	Beam lower flange width	mm	50 - 150	58 - 200	70 - 200	80 - 200	100 - 200	106 - 200	120 - 200
	Weight	kg	5.5	10.0	12.0	17.0	26.5	39.5	73.0
	Model and order code		SC500B	SC1000B	SC1500B	SC2000B	SC3000B	SC5000B	SC10000B
Trolley with tie-rod C type	Beam lower flange width	mm	50 - 200	58 - 300	70 - 300	80 - 300	100 - 300	106 - 300	120 - 300
	Weight	kg	6.0	11.0	13.0	18.5	28	42.0	77.0
	Model and order code		SC500C	SC1000C	SC1500C	SC2000C	SC3000C	SC5000C	SC10000C

# Geared trolley - "MC" type

The machines are planned in conformity with the 2006/42/EEC Directive

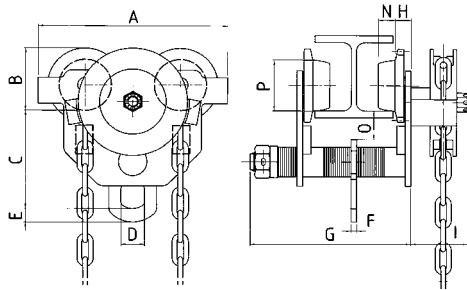
**With :** EC markings  
 EC declaration of conformity  
 Statement report-Fitting for use  
 Information for use



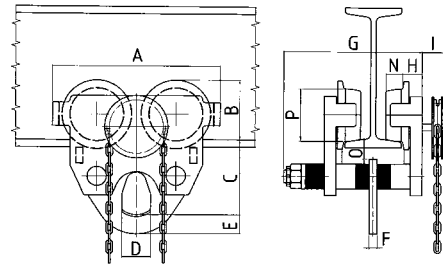
**INTENDED USE** The manual geared trolley MC type are exclusively planned to move the weight applied to the chain hoist, running on the lower flanges of the beam, in conditions of safe and controlled efficiency, respecting the measures and limits of use as described in the Information of use, and using the authorized lifting machine and accessories.

## TECHNICAL AND CONSTRUCTION CHARACTERISTICS :

- Sides:** in steel sheet, above which the pins of the motion
- Lower tie-rod:** in steel, stopped on the sides by nuts washers and split pins and provided, with various dept spacers, in order that the trolley is adjustable to the beam.
- Motion wheels:** in cast iron, mechanically worked, with a rolling strip appropriate to the expected running beam.  
 The wheels are supported on permanently lubricated ball bearings (simple or double).  
 Two wheels are idle and two wheels are driving
- Moving pulley:** molten, with pockets, fixed on a central tree through nut and split pin ; the tree, provided with gearwheel, engage with the crown wheel of the driving wheels.
- Moving chain:** in round steel, running on the moving pulley, with steel lateral chain guide, fixed on the side.
- Trolley plate (for hoist) :** is the base and the hanging point of the lifting unity, in steel, with an appropriate shaped buttonhole.
- Trolley control:** is activated by pulling manually one of the descent falls of the motion chain rolling the correspondent pulley and afterwards, the central wheelgear and the driving wheels.



500 KG - 5000 KG TROLLEY



10000 and 20000 KG TROLLEY

CAPACITY		kg	500	1.000	1.500	2.000	3.000	5.000	10.000	20.000
Displacement with 5 mt hand chain		mm	1.196	1.484	1.507	1.509	1.112	1.110	994	530
Effort on the chain		kg	2,5	5	7	9	9,5	14	24	25
Minimum radius		m	0,8	1,0	1,0	1,1	1,3	1,4	2,0	3,5
Measure A		mm	200	246	261	275	333	377	423	555
Measure B		mm	67	81	88	94	115	126	155	200
Measure C		mm	105	125	132	141	167	192	190	240
Measure D		mm	24	27	31	37	39	49	71	92
Measure E		mm	14	15	17	20	23	31	50	63
Measure F		mm	6	8	10	12	14	16	20	30
Measure G with tie-rod A		mm	169	212	217	237	265	- -	- -	- -
Measure G with tie-rod B		mm	220	282	282	293	303	318	349	406
Measure G with tie-rod C		mm	269	384	384	395	406	418	450	508
Measure H		mm	17	22	22	26	28	38	48	75
Measure I		mm	60	60	60	60	60	60	60	90
Measure N		mm	17	19	21	23	26	35	42	53
Measure O		mm	30	37	37	36	38	41	42	57
Measure P		mm	55	68	74	79	99	109	135	175
Trolley with tie-rod A type	Beam lower flange width	mm	50 - 100	58 - 131	70 - 135	80 - 143	100 - 150	- -	- -	- -
	Weight	kg	8,50	12,00	14,00	19,00	28,00	- -	- -	- -
	Model and order code		MC500A	MC1000A	MC1500A	MC2000A	MC3000A	- -	- -	- -
Trolley with tie-rod B type	Beam lower flange width	mm	50 - 150	58 - 200	70 - 200	80 - 200	100 - 200	106 - 200	120 - 200	131 - 200
	Weight	kg	8,70	12,50	14,70	20,00	29,00	43,00	73,00	159,00
	Model and order code		MC500B	MC1000B	MC1500B	MC2000B	MC3000B	MC5000B	MC10000B	MC20000B
Trolley with tie-rod C type	Beam lower flange width	mm	50 - 200	58 - 300	70 - 300	80 - 200	100 - 300	106 - 300	120 - 300	131 - 300
	Weight	kg	9,00	13,50	16,00	21,00	31,00	45,00	78,00	166,00
	Model and order code		MC500C	MC1000C	MC1500C	MC2000C	MC3000C	MC5000C	MC10000C	MC20000C
Weight for each mt more of chain		kg	0,9							

# Low headroom chain hoist with push trolley " CC-S " Type

The machines are planned in conformity with the 2006/42/EEC Directive



With : EC markings  
EC declaration of conformity

Statement report-Fitting for use  
Information for use

**INTENDED USE** The low headroom manual chain hoists CCS Type running on the lower flanges of the beam, are planned only to lift free weights in the space, straight up, in condition of safe and controlled efficiency, in according to the measures and limits of use as described in the instructions of use and using accessories that the grip element (lifting hook) and the upper base (hanging hook) allow.

## TECHNICAL AND CONSTRUCTION CHARACTERISTICS :

**Structure** : compact and light

**Reducer**: coaxial with high-resistance cylindrical steel gears. Module toothing entirely supported on ball bearings closed in a carter permanently lubricated.

**Load sprocket**: with four pockets, molten, thermally treated for a perfect running of the carrying chain.

**Chain guide and extractor**: guarantee a precise housing and a perfect extraction of the carrying chain either in raise or in descent.

**Brake**: with a safety jump to stop the weight in the wanted position. The brake is automatic at weight pression and has two friction joints free from asbestos

**Carrying chain limit switches**: composed of two steel plates fixed on the descent side of the chain that avoids the chain going out.

**Hanging and lifting hooks**: high resistant, in tempered steel, turning with ball bearing, with a safety device to avoid unhitching.

**Carrying chain**: in high resistant steel, with round links, superficially hardened, covered with zinc to obtain a high resistance to wear, to corrosion and to ageing.

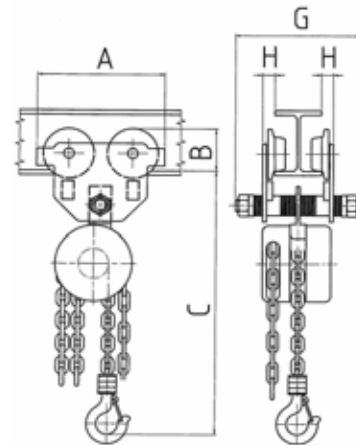
**Moving/chain**: in round steel, running on a pocket pulley. Chain and pulley are protected by a steel sheet side cover.

**Sides**: in steel sheet, above which the pins of the motion

**Wheels**: in cast iron mechanically worked, with a rolling strip appropriate to the expected running beam. The wheels are supported on permanently lubricated ball bearings (simple or double)

**Hoist control**: The hoist is activated by pulling manually one of the descent falls of the moving /motion chain.

**Trolley control**: is activated by pushing directly the lifted weight



CAPACITY		kg	500	1.000	1.500	2.000	3.000	5.000	10.000
Falls of chain			1	1	1	2	2	2	4
Raising with 5 mt of hand chain		mm	178	120	94	60	47	30	15
Effort on the hand chain		kg	22	30	35	31	36	39	40
Measure A		mm	200	246	261	275	333	377	423
Measure B		mm	67	81	88	94	115	126	155
Measure C		mm	300	350	420	450	560	650	710
Measure G with tie-rod A		mm	193	240	247	270	295	-	-
Measure G with tie-rod B		mm	246	311	309	327	343	354	387
Measure G with tie-rod C		mm	295	413	412	429	445	456	489
Measure H		mm	17	22	22	26	28	38	48
Minimum radius		mt	0,8	1,0	1,0	1,1	1,3	1,4	2,0
Weight with m 3 x 2.50 of chain		kg	14	20	28	32	51	78	147
Weight for each mt more of chain		kg	1,71	1,71	2,31	2,51	3,71	5,31	9,71
Tie-rod A type	Beam lower flange width	mm	50 - 100	58 - 131	70 - 135	80 - 143	100 - 150	-	-
	Order code :		CC-SA . . . . ( + capacity)						
Tie-rod B type	Beam lower flange width	mm	50 - 150	58 - 200	70 - 200	80 - 200	100 - 200	106 - 200	120 - 200
	Order code :		CC-SB . . . . ( + capacity)						
Tie-rod C type	Beam lower flange width	mm	50 - 200	58 - 300	70 - 300	80 - 300	100 - 300	106 - 300	120 - 300
	Order code :		CC-SC . . . . ( + capacity)						



# Low headroom chain hoist with geared trolley " CC-M " Type

The machines are planned in conformity with the 2006/42/EEC Directive

With : EC markings  
EC declaration of conformity

Statement report-Fitting for use  
Information for use



**INTENDED USE :** The low headroom manual chain hoists CCM Type running on the lower flanges of the beam, are planned only to lift free weights in the space, straight up, in condition of safe and controlled efficiency, in according to the measures and limits of use as described in the instructions of use and using accessories that the grip element (lifting hook) and the upper base (hanging hook) allow.

## TECHNICAL AND CONSTRUCTION CHARACTERISTICS :

**Structure :** compact and light

**Reducer:** coaxial with high-resistance cylindrical steel gears. Module toothing entirely supported on ball bearings closed in a carter permanently lubricated.

**Load sprocket:** with four pockets, molten, thermally treated for a perfect running of the carrying chain.

**Chain guide and extractor:** guarantee a precise housing and a perfect extraction of the carrying chain either in raise or in descent.

**Brake:** with a safety jump to stop the weight in the wanted position. The brake is automatic at weight pression and has two friction joints free from asbestos.

**Carrying chain limit switches:** composed of two steel plates fixed on the descent side of the chain that avoids the chain going out.

**Hanging and lifting hooks:** high resistant, in tempered steel, turning with ball bearing, with a safety device to avoid unhitching.

**Carrying chain:** in high resistant steel, with round links, superficially hardened, covered with zinc to obtain a high resistance to wear, to corrosion and to ageing.

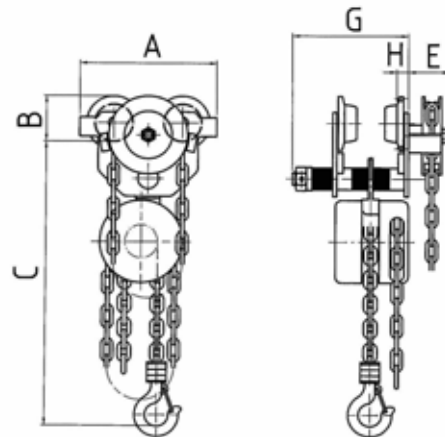
**Moving/hand chain:** in round steel, running on a pocket pulley. Chain and pulley are protected by a steel sheet side cover.

**Sides:** in steel sheet, above which the pins of the motion

**Wheels:** in cast iron mechanically worked, with a rolling strip appropriate to the expected running beam. The wheels are supported on permanently lubricated ball bearings (simple or double). Two wheels are idle and two wheels are driving

**Hoist control:** the hoist is activated by pulling manually one of the descent falls of the moving /motion chain.

**Trolley control:** the trolley is activated by pulling manually one of the descent falls of the moving /motion chain.



CAPACITY		kg	500	1.000	1.500	2.000	3.000	5.000	10.000	20.000
Falls of chain			1	1	1	2	2	2	4	8
Raising with 5 mt of hand chain		mm	178	120	94	60	47	30	15	15
Stress on the hand chain		kg	22	30	35	31	36	39	40	40
Measure A		mm	200	246	261	275	333	377	423	555
Measure B		mm	67	81	88	94	115	126	155	200
Measure C		mm	300	350	420	450	560	650	710	1060
Measure G with tie-rod A		mm	169	212	217	237	265	-	-	-
Measure G with tie-rod B		mm	220	282	282	293	303	318	349	406
Measure G with tie-rod C		mm	269	384	384	395	406	418	450	508
Measure E		mm	60	60	60	60	60	60	60	90
Measure H		mm	17	22	22	26	28	38	48	75
Minimum radius		mt	0,8	1,0	1,0	1,1	1,3	1,4	2,0	3,5
Weight with m 3 x 2.50 of chain		kg	17	24	32	35	55	82	150	320
Weight for each mt more of chain		kg	2,60	2,60	3,20	3,40	4,60	6,20	10,60	21,20
Tie rod A type	Beam lower flange width	mm	50 - 100	58 - 131	70 - 135	80 - 143	100 - 150	-	-	-
	Order Code :		CC-MA . . . . ( + capacity)							
Tie rod B type	Beam lower flange width	mm	50 - 150	58 - 200	70 - 200	80 - 200	100 - 200	106 - 200	120 - 200	131 - 200
	Order Code :		CC-MB . . . . ( + capacity)							
Tie rod C type	Beam lower flange width	mm	50 - 200	58 - 300	70 - 300	80 - 300	100 - 300	106 - 300	120 - 300	131 - 300
	Order Code :		CC-MC . . . . ( + capacity)							

# Ultra-Low headroom chain hoist with geared trolley " CR " Type

The machines are planned in conformity with the 2006/42/EEC Directive

**With :** EC markings  
EC declaration of conformity  
Statement report-Fitting for use  
Information for use



**INTENDED USE :** The ultra-low manual chain hoists CR Type with running on the lower flanges of the beam, are planned only to lift free weights in the space, straight up in condition and controlled efficiency, in according to the measures and limits of use as described in the instructions of use and using accessories that the grip element (lifting hook) and the upper base (hanging hook) allow

## TECHNICAL AND CONSTRUCTION CHARACTERISTICS :

**Structure :** compact and light

**Reducer:** coaxial with high-resistance cylindrical steel gears. Module toothing entirely supported on ball bearings closed in a carter permanently lubricated

**Load sprocket:** with four pockets, molten, thermally treated for a perfect running of the carrying chain.

**Chain guide and extractor:** guarantee a precise housing and a perfect extraction of the carrying chain either in raise or in descent.

**Brake:** with a safety jump to stop the weight in the wanted position. The brake is automatic at weight pression and has two friction joints free from asbestos

**Carrying chain limit switches:** composed of two steel plates fixed on the descent side of the chain that avoids the chain going out.

**Hanging and lifting hooks:** high resistant, in tempered steel, turning with ball bearing, with a safety device to avoid unhitching.

**Carrying chain:** in high resistant steel, with round links, superficially hardened, covered with zinc to obtain a high resistance to wear, corrosion, ageing.

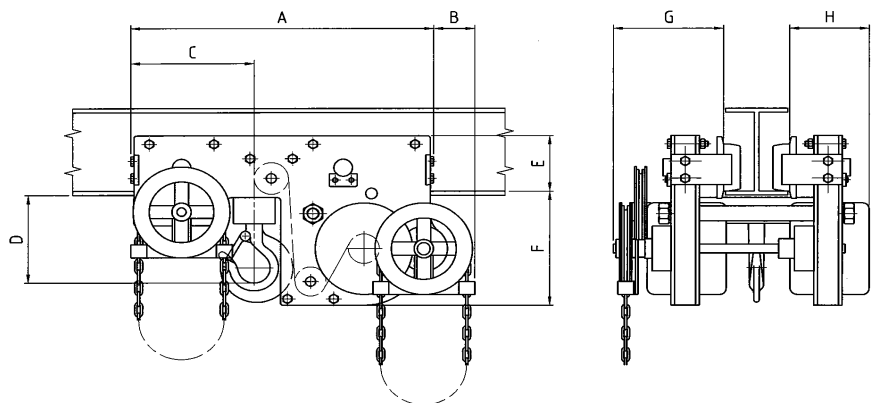
**Moving/hand chain:** in round steel, running on a pocket pulley. Chain and pulley are protected by a steel sheet side cover.

**Sides:** in steel sheet, above which the pins of the motion

**Wheels:** in cast iron mechanically worked, with a rolling strip appropriate to the expected running beam. The wheels are supported on permanently lubricated ball bearings (simple or double). Two wheels are idle and two wheels are driving

**Hoist control:** the hoist is activated by pulling manually one of the descent falls of the moving /motion chain.

**Trolley control:** the trolley is activated by pulling manually one of the descent falls of the moving /motion chain.



"CR 1000 - 5000"

CAPACITY	kg	1.000	2.000	3.000	5.000	10.000	15.000	20.000	25.000	30.000
<b>Model :</b>		CR1000	CR2000	CR3000	CR5000	CR10000	CR15000	CR20000	CR25000	CR30000
Group of lifting	n	2	2	2	2	2	2	2	2	4
Falls of chain	n	1 + 1	1 + 1	1 + 1	1 + 1	2 + 2	3 + 3	4 + 4	5 + 5	6 + 6
Raising with 5 mt of hand chain	mm	70	60	32	26	13	9	7	5	9
Effort on the hand chain	kg	20	30	30	38	40	40	40	40	40
Measure A	mm	425	435	575	665	810	830	1.020	1.120	1.380
Measure B	mm	30	60	85	85	90	85	80	75	25
Measure C	mm	155	175	245	275	335	375	475	515	690
Measure D (minimum)	mm	110	130	160	210	240	300	300	360	440
Measure E	mm	85	100	120	130	165	200	220	240	270
Measure F	mm	165	185	215	265	285	320	355	355	370
Measure G	mm	185	195	210	235	270	270	285	290	295
Measure H	mm	115	115	150	170	185	200	210	220	295
Weight with m 3 x 2.50 of chain	ca. kg	40	60	90	120	250	420	500	580	750
Weight for each mt more of chain	ca. kg	3,40	3,40	4,00	5,50	10,00	15,00	20,00	25,00	30,00

# Manual spur gear rope winch " CL "Type

The machines are planned in conformity with the 2006/42/EEC Directive

**With :** EC markings  
EC declaration of conformity  
Statement report-Fitting for use  
Information for use



**INTENDED USE** The manual winch "CL" and "CLV" type are planned only to lift free weights in the space, straight up, or towing loads, in condition of safe and controlled efficiency, in according to the measures and limits of use as described in the instruction of use and using suitable accessories.

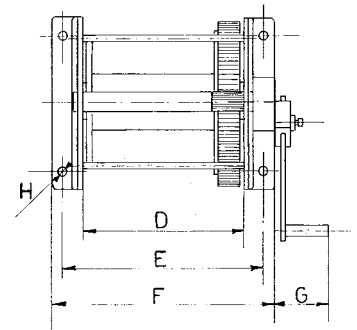
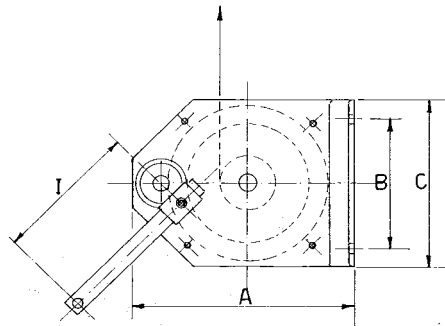
## TECHNICAL AND CONSTRUCTION CHARACTERISTICS :

- Structure:** compact and light execution made of two steel plates
- Mechanism** All gearings, and drum, are revolving on permanent lubrication ball bearings.
- Crank handle :** adjustable and removable
- Brake:** with a safety jump to stop the weight in the wanted position. The brake is automatic and has two bronze friction disk.
- Winch control :** through manual rotation of crank handle.

## MOUNTING POSITION :

On the flat or wall-mounted. The special design allows the crank handle to rotate without interfering with the ground plane.

**STAINLESS STEEL : 250-500-1000 KG CAPACITY ARE AVAILABLE ALSO IN TOTALLY STAINLESS STEEL.**



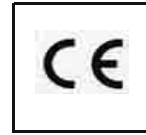
CAPACITY		kg	250	500	1.000	1.500
MODEL			CLM250	CLM500	CLM1000	CLM1500
Drum diameter		mm	54	76	95	114
Maximum rope diameter		mm	5	7	9	11
The rope must have a minimum breaking load		kg	1.250	2.500	5.000	7.500
Rope example	Rope 133 / 205 wires	mm	4 / 133	6 / 133	8 / 205	10 / 205
	Rope breaking load	kg	1.250	2.640	5.000	8.200
	Rope capacity	m	35	35	40	45
	Lift per crank revolution	mm	35	33	29	28
	kg	15	20	23	26	
Measure A		mm	250	310	420	540
Measure B		mm	120	160	250	300
Measure C		mm	190	250	360	440
Measure D		mm	140	220	270	330
Measure E		mm	184	270	330	415
Measure F		mm	220	310	380	470
Measure G		mm	110	115	160	160
Measure H		mm	12	14	16	18
Measure I		mm	150	200	300	400
Weight		kg	11	24	42	70

1.000	2.000	3.000	5.000
CLV1000	CLV2000	CLV3000	CLV5000
95	140	168	219
9	13	16	20
5.000	10.000	15.000	25.000
8 / 205	12 / 133	14 / 205	18 / 205
5.000	10.570	16.500	26.700
200	200	200	200
48	20	13,5	9
20 + 20	15 + 15	16 + 16	18 + 18
500	620	750	950
300	400	500	600
380	510	640	830
370	510	625	760
440	590	720	870
485	645	785	940
200	200	200	200
18	20	22	25
350	350	350	350
70	140	220	400

# Electric cable winch " E W " type

The machines are planned in conformity with the 2006/42/EEC Directive

**With :** EC markings  
 EC declaration of conformity  
 Statement report-Fitting for use  
 Information for use

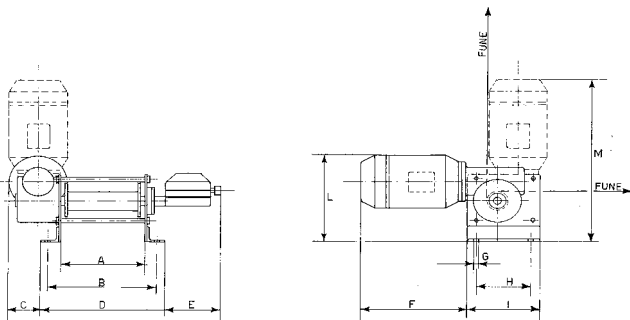


**INTENDED USE** The electric winch "EW" type are planned only to lift free weights in the space, straight up, or towing loads, in condition of safe and controlled efficiency, in according to the measures and limits of use as described in the instruction of use and using suitable accessories.

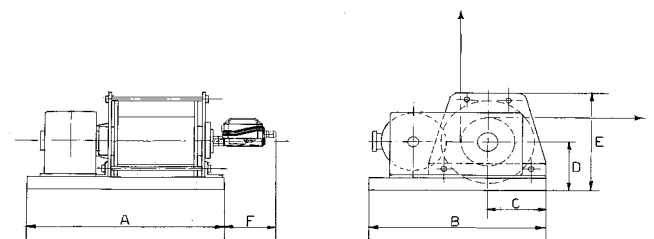
## TECHNICAL AND CONSTRUCTION CHARACTERISTICS :

Worm gearboxes or parallel shaft gearboxes (depending on capacity) in oil bath.  
 All structure in steel. Welded drum.

Three-phase induction brake motor - Adjustable up-down limit switch as standard.  
 Low voltage push button control with emergency stop.  
 Overload limiter as standard from 1000 kg, optional for other capacity.



EW winch Kg. 200 - 500



EW winch Kg. 990 - 2.000 - 3.000 - 5.000

# Electric cable winch " E W " type

## Technical characteristics

CAPACITY		Kg	200	500	990	2000	3000	5000
Low speed	Model :		<b>EW200</b>	<b>EW500</b>	<b>EW990</b>	<b>EW2000</b>	<b>EW3000</b>	<b>EW5000</b>
	Speed 1st layer/3rd layer	<b>m/min</b>	8 / 10	7 / 9	4,5 / 6	4 / 5	4 / 5	6 / 8
	Motor Power	<b>kW</b>	0,55	1,1	1,1	1,85	3	7,5
High speed	Model :		<b>EW200V</b>	<b>EW500V</b>	<b>EW990V</b>	<b>EW2000V</b>	<b>EW3000V</b>	- -
	Speed 1st layer/3rd layer	<b>m/min</b>	16 / 20	14 / 18	9 / 12	8 / 10	8 / 10	- -
	Motor Power	<b>kW</b>	0,75	1,85	2,2	3	5,5	- -
Rope	Rope diameter	<b>mm.</b>	4	6	9	12	14	18
	The rope must have a minimum breaking load.	<b>kg</b>	1000	2500	4950	10000	15000	25000
	Rope capacity (on 3 layer)	<b>m</b>	30	35	50	60	80	100
Dimension	Measure A	<b>mm</b>	230	290	630	750	920	1130
	Measure B	<b>mm</b>	282	355	610	700	880	1000
	Measure C	<b>mm</b>	100	105	220	250	310	390
	Measure D	<b>mm</b>	318	400	160	190	230	260
	Measure E	<b>mm</b>	150	140	320	370	450	520
	Measure F	<b>mm</b>	295	350	150	130	130	120
	Measure G	<b>mm</b>	12	14	- -	- -	- -	- -
	Measure H	<b>mm</b>	160	200	- -	- -	- -	- -
	Measure I	<b>mm</b>	200	250	- -	- -	- -	- -
	Measure L	<b>mm</b>	230	300	- -	- -	- -	- -
	Measure M	<b>mm</b>	500	600	- -	- -	- -	- -
	Weight (without rope)	<b>kg</b>	35	70	115	210	350	600

**TENSION:** Volts 380/50 Standard - Other tension as optional

**WINCH CONTROL :**Low voltage (48V) push botton control

**OPTIONALS :** Grooved drum - Rope press - Drum with separator  
 Drum extended for special lenght  
 Different speed  
 Releasable drum when unloaded

# Lever hoist " ATPC" Type

The machines are planned in conformity with the 2006/42/EEC Directive

With : EC markings  
EC declaration of conformity  
Statement report-Fitting for use  
Information for use



## INTENDED USE :

The lever hoists ATPC type are planned only to lift free weights in the space, straight up, or towing loads, or for tensioning operations, in condition of safe and controlled efficiency, in according to the measures and limits of use as described in the instruction of use, and using accessories that the grip element (lifting hook) and the upper base (hanging hook) allow.

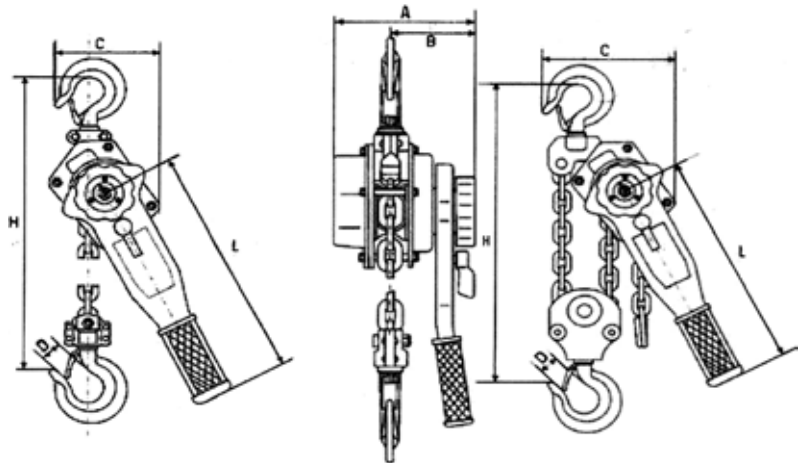
## TECHNICAL AND CONSTRUCTION CHARACTERISTICS :

**Brake:** with a safety jump to stop the weight in the wanted position The brake is automatic at weight pression and has two friction joints free from asbestos.

**Load chain:** in high resistant steel, with round links, superficially hardened, covered with zinc to obtain a high resistance to wear, to corrosion and to age.

**Hanging and lifting hooks:** high resistant, in tempered steel, turning with ball bearing, with a safety device to avoid unhitching.

**Lever hoist control :** through manual actuation on actuation lever.



CAPACITY	kg	750	1500	3000	6000
Model		ATPC750	ATPC1500	ATPC3000	ATPC6000
Fall of chain	n.	1	1	1	2
Measure : A	mm	149	171	203	203
Measure : B	mm	90	100	110	110
Measure : C	mm	130	155	197	255
Measure : D	mm	26	30	40	42
Measure : L	mm	290	380	390	390
Measure : H minimum	mm	307	370	470	635
Chain dimension	mm	6 x 18	7 x 21	10 x 30	10 x 30
Effort on lever	kg.	20	22	40	32
Lever hoist weight with 1,5 mt chain	kg.	7	11	20	29
Weight for each mt more of chain	kg.	0,75	1,05	2,15	4,3

## Cast iron hand wheel



<b>External diameter</b>	mm	<b>140</b>	<b>210</b>	<b>260</b>	<b>320</b>	<b>390</b>
Diameter and length hub	mm	37 x 42	42 x 43	52 x 60	65 x 42	75 x 61
Hole diameter	mm	no hole	no hole	19	18	20
Suitable for chain	mm	5x28x18	5x28x18	5x28x18	5x28x18	5x28x18



**A.S. CARLO SAPORITI S.R.L. - VERGHERA**  
hoisting device

21017 Verghera (VA)  
Via Nino Locarno, 123  
Tel. + 39 0331 228.464 - Fax +39 0331 223988  
E-Mail: [info@saporitisrl.it](mailto:info@saporitisrl.it)  
[www.saporitisrl.it](http://www.saporitisrl.it)